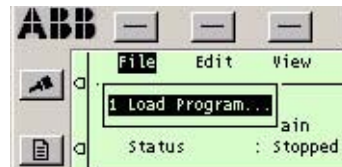


### 3 Loading a Program

A program can be read from a diskette or from the robot's mass memory. To open a program, do as follows:

- Choose **File: Load Program**.



The following dialog box will appear (see Figure 2).

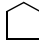




Figure 2 The dialog box displays a list of all available programs.

#### A - Program list

The Mass memory unit field indicates:

- **flp1** to denote a diskette
- **hd0a** to denote the robot's internal memory (the flash memory)
- **bd0** to denote a USB flash disk device
- **fd** to denote a USB floppy device

- Press **Unit** until the desired unit is displayed.
- Choose the desired program – use ArrowUp  or ArrowDown  to scroll through the list: select **..** to go up one level and press  to go down one level.
- Press **OK**.